

Plate 46

Designer Luca Nichetto

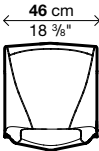
Featuring an original and unmistakeable style, Plate is a chair collection that combines refined technical design with traditionally crafted finishes. In fact, its striking lines, with a dynamic racing car look, are enhanced with coloured stitching that contrasts with its upholstery. The legs, in die-cast aluminium, add an attractive feeling of lightness.

Leg finish:

- Polished aluminium
- Aluminium with white lacquer
- Aluminium with black lacquer

Finish of cover:

- DIVINA MELANGE 2 (Kvadrat®) fabric
- SCUBA (Kvadrat®) fabric
- EXTREMA/AU (Flukso®) synthetic leather



! Important: stitching is usually the same colour as the upholstery. For contrasting stitching, please specify the colour of the yarn when ordering (whether white, black or red is required).

Before accepting an order using the “Customer’s fabric”, Kristalia requests a sample of the fabric in order to assess feasibility (the sample must measure at least 30x30 cm). The amounts specified are for fabrics with a minimum width of 140 cm. For fabrics of a shorter width, please ask for the number of metres required.

Chair				
Code	Cover		Legs	Vol.
05PLA01	client's fabric	mt.1,0	lacquered polished aluminium	0.33
05PLA01	fabric DIVINA MELANGE 2		lacquered polished aluminium	0.33
05PLA01	fabric SCUBA		lacquered polished aluminium	0.33
05PLA01	synthetic leather EXTREMA/AU		lacquered polished aluminium	0.33

2 chairs in each package

Chair with arm rests				
Code	Cover		Legs	Vol.
05PLA02	client's fabric	mt.1,3	lacquered polished aluminium	0.28
05PLA02	fabric DIVINA MELANGE 2		lacquered polished aluminium	0.28
05PLA02	fabric SCUBA		lacquered polished aluminium	0.28
05PLA02	synthetic leather EXTREMA/AU		lacquered polished aluminium	0.28

1 armchair in each package

Information about fabrics

- DIVINA MELANGE 2: 100% pure new wool

SCUBA: 100% Polyurethane

EXTREMA/AU synthetic leather: 63% polyurethane 37% cotton
- kvadrat

kvadrat

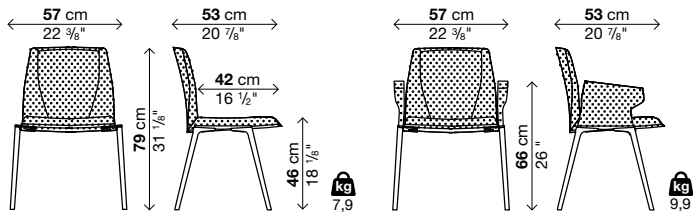


Plate 50

Designer Luca Nichetto

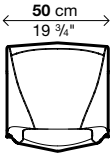
Featuring an original and unmistakeable style, Plate is a chair collection that combines refined technical design with traditionally crafted finishes. In fact, its striking lines, with a dynamic racing car look, are enhanced with coloured stitching that contrasts with its upholstery. The legs, in die-cast aluminium, add an attractive feeling of lightness.

Leg finish:

- Polished aluminium
- Aluminium with white lacquer
- Aluminium with black lacquer

Finish of cover:

- DIVINA MELANGE 2 (Kvadrat®) fabric
- SCUBA (Kvadrat®) fabric
- EXTREMA/AU (Flukso®) synthetic leather



! Important: stitching is usually the same colour as the upholstery. For contrasting stitching, please specify the colour of the yarn when ordering (whether white, black or red is required).

Before accepting an order using the “Customer’s fabric”, Kristalia requests a sample of the fabric in order to assess feasibility (the sample must measure at least 30x30 cm). The amounts specified are for fabrics with a minimum width of 140 cm. For fabrics of a shorter width, please ask for the number of metres required.

Chair				
Code	Cover		Legs	Vol.
05PLA03	client's fabric		lacquered	0.33
			polished aluminium	
05PLA03	fabric DIVINA MELANGE 2		lacquered	0.33
			polished aluminium	
05PLA03	fabric SCUBA		lacquered	0.33
			polished aluminium	
05PLA03	synthetic leather EXTREMA/AU		lacquered	0.33
			polished aluminium	

2 chairs in each package

Chair with arm rests				
Code	Cover		Legs	Vol.
05PLA04	client's fabric		lacquered	0.28
			polished aluminium	
05PLA04	fabric DIVINA MELANGE 2		lacquered	0.28
			polished aluminium	
05PLA04	fabric SCUBA		lacquered	0.28
			polished aluminium	
05PLA04	synthetic leather EXTREMA/AU		lacquered	0.28
			polished aluminium	

1 armchair in each package

Information about fabrics

- DIVINA MELANGE 2: 100% pure new wool

SCUBA: 100% Polyurethane

EXTREMA/AU synthetic leather: 63% polyurethane 37% cotton
- kvadrat**

kvadrat

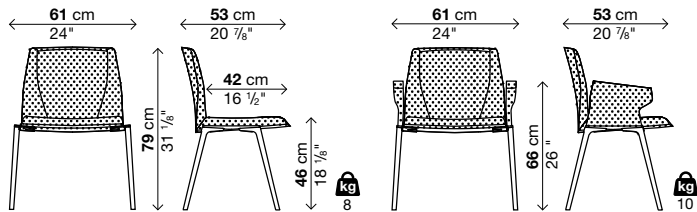


Plate 50 on castors

Designer Luca Nichetto

Plate is a swivel chair for the office and for the contract furnishing sector, featuring guaranteed comfort and unmistakable style. Its upholstery, available in fabric or synthetic leather in different colours, has stitching in contrasting colours, which highlights the contours of the chair and adds a touch of fine craftsmanship. The seat, with gas-lift adjustment system, is connected to the structure by its thermoformed column with castors, in aluminium with polished finish or in white or black lacquer.

Metal finish:

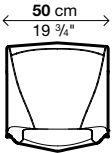
- Polished aluminium
- Aluminium with white lacquer
- Aluminium with black lacquer

Cone finish below seat:

Black or white plastic

Finish of cover:

- DIVINA MELANGE 2 (Kvadrat®) fabric
- SCUBA (Kvadrat®) fabric
- EXTREMA/AU (Flukso®) synthetic leather



! Important: stitching is usually the same colour as the upholstery. For contrasting stitching, please specify the colour of the yarn when ordering (whether white, black or red is required).

Before accepting an order using the “Customer’s fabric”, Kristalia requests a sample of the fabric in order to assess feasibility (the sample must measure at least 30x30 cm). The amounts specified are for fabrics with a minimum width of 140 cm. For fabrics of a shorter width, please ask for the number of metres required.

Chair				
Code	Cover		Legs	Vol.
05PLA23	client's fabric	mt.1,0	lacquered	0.33
			polished aluminium	
05PLA23	fabric DIVINA MELANGE 2		lacquered	0.33
			polished aluminium	
05PLA23	fabric SCUBA		lacquered	0.33
			polished aluminium	
05PLA23	synthetic leather EXTREMA/AU		lacquered	0.33
			polished aluminium	

1 chair in each package

Chair with arm rests				
Code	Cover		Legs	Vol.
05PLA25	client's fabric	mt.1,3	lacquered	0.28
			polished aluminium	
05PLA25	fabric DIVINA MELANGE 2		lacquered	0.28
			polished aluminium	
05PLA25	fabric SCUBA		lacquered	0.28
			polished aluminium	
05PLA25	synthetic leather EXTREMA/AU		lacquered	0.28
			polished aluminium	

1 armchair in each package

Information about fabrics

- DIVINA MELANGE 2: 100% pure new wool

SCUBA: 100% Polyurethane

EXTREMA/AU synthetic leather: 63% polyurethane 37% cotton
- kvadrat**

kvadrat

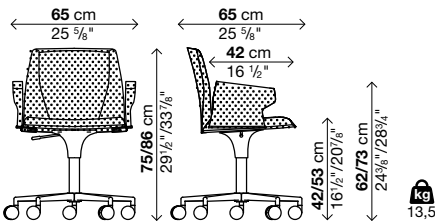
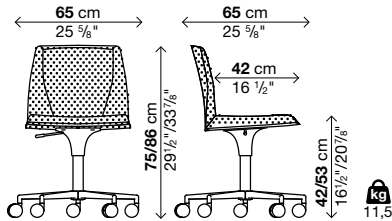


Plate 70

Designer Luca Nichetto

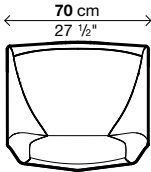
Featuring an original and unmistakeable style, Plate is a chair collection that combines refined technical design with traditionally crafted finishes. In fact, its striking lines, with a dynamic racing car look, are enhanced with coloured stitching that contrasts with its upholstery. The legs, in die-cast aluminium, add an attractive feeling of lightness.

Leg finish:

- Polished aluminium
- Aluminium with white lacquer
- Aluminium with black lacquer

Finish of cover:

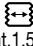
- DIVINA MELANGE 2 (Kvadrat®) fabric
- SCUBA (Kvadrat®) fabric
- EXTREMA/AU (Flukso®) synthetic leather



! Important: stitching is usually the same colour as the upholstery. For contrasting stitching, please specify the colour of the yarn when ordering (whether white, black or red is required).

📏 Before accepting an order using the “Customer’s fabric”, Kristalia requests a sample of the fabric in order to assess feasibility (the sample must measure at least 30x30 cm). The amounts specified are for fabrics with a minimum width of 140 cm. For fabrics of a shorter width, please ask for the number of metres required.

Lounge chair

Code	Cover	Legs	Vol.
05PLA05	client's fabric  mt.1,5	lacquered	0.43
		polished aluminium	
05PLA05	fabric DIVINA MELANGE 2	lacquered	0.43
		polished aluminium	
05PLA05	fabric SCUBA	lacquered	0.43
		polished aluminium	
05PLA05	synthetic leather EXTREMA/AU	lacquered	0.43
		polished aluminium	

1 chair in each package


Information about fabrics

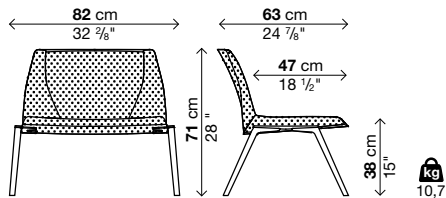
- DIVINA MELANGE 2: 100% pure new wool

SCUBA: 100% Polyurethane

EXTREMA/AU synthetic leather: 63% polyurethane 37% cotton
- kvadrat**

kvadrat





Finishes

Finiture metallo

Metal finish / Metallausführungen / Acabados metal / Finitions métal



Alluminio lucidato / Polished aluminium / Aluminium glänzend /
Aluminio pulido / Aluminium poli



Bianco / White / Weiß / Blanco / Blanc

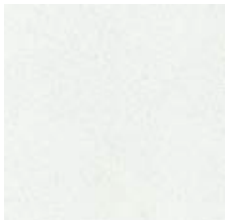


Nero / Black / Schwarz / Negro / Noir

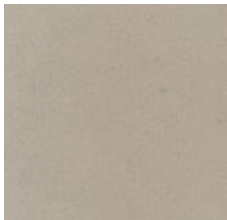
Finiture pelle sintetica “Extrema/AU”

“Extrema/AU” synthetic leather finishes / Ausführungen “Extrema/AU” / Acabados “Extrema/AU” / Finitions “Extrema/AU”

63% polyurethane - 37% cotton



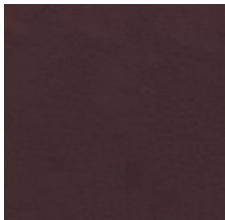
150



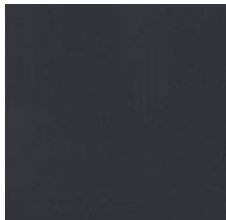
450



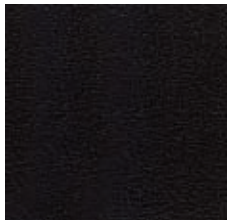
850



1350



2150



2250

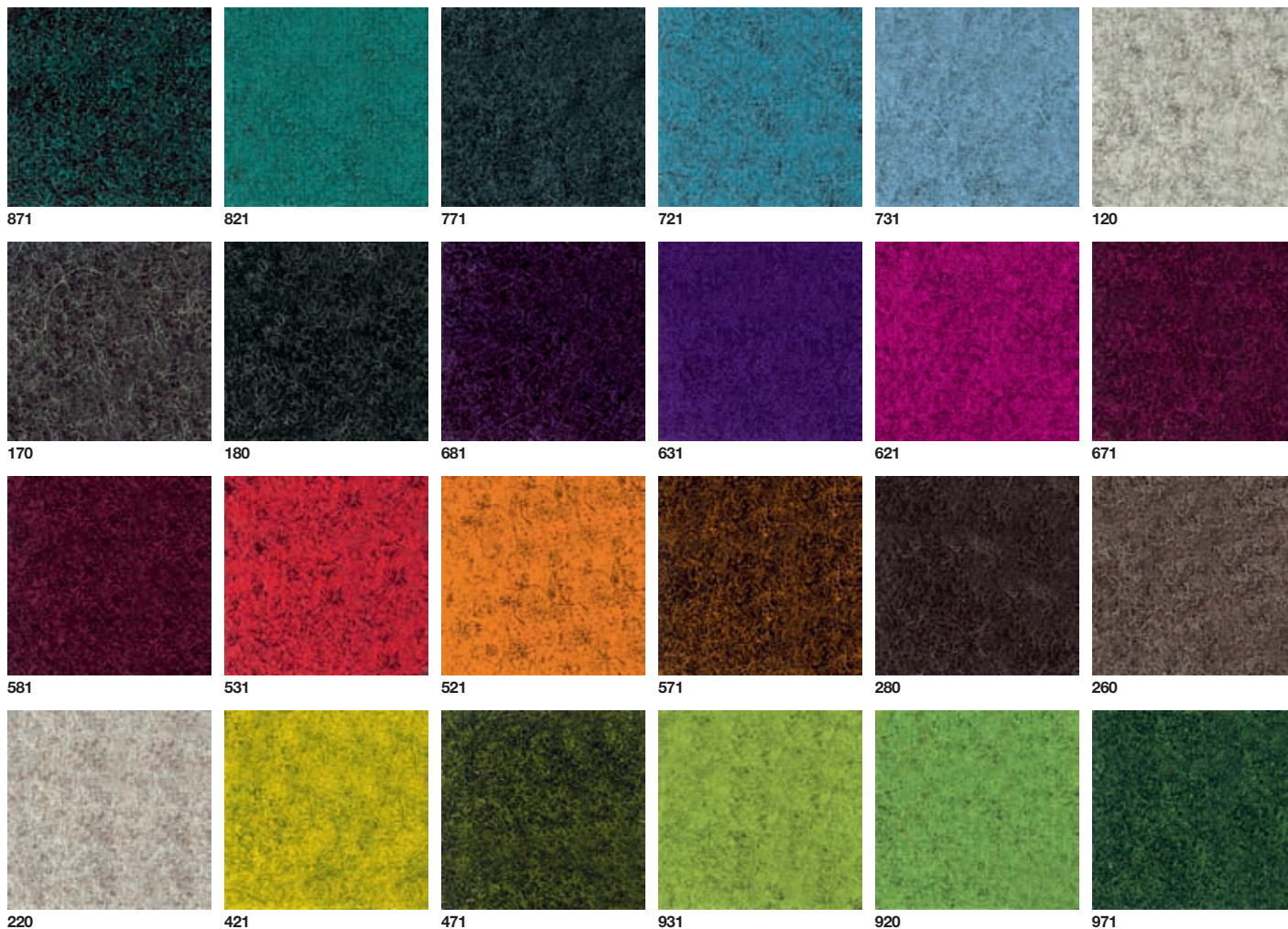
Finishes

Finiture tessuto "Divina Melange 2"

"Divina Melange 2" fabric finishes / Ausführungen Stoff "Divina Melange 2" / Acabados Tejido "Divina Melange 2" / Tissue "Divina Melange 2"

100% new wool

kvadrat



Finishes

Finiture tessuto "Scuba"

"Scuba" fabric finishes / Ausführungen Stoff "Scuba" / Acabados Tejido "Scuba" / Tissu "Scuba"

100% polyurethane

|m|a|h|a|r|a|m| **kvadrat**

