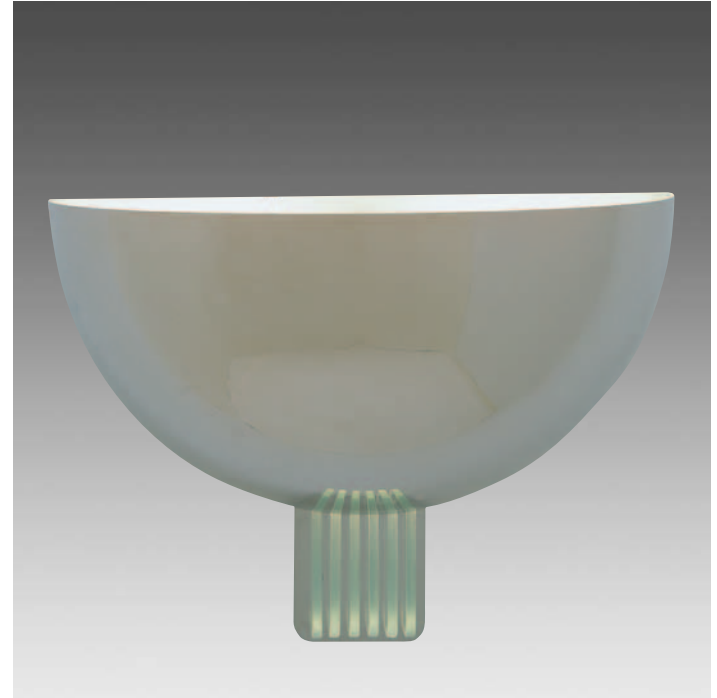
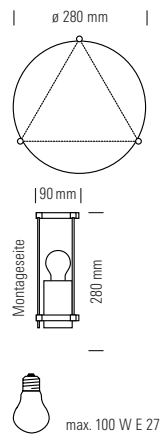


**WBT 77**  
Wand-/Deckenleuchte  
Design:  
Benedict Tonon, 1977.

Material:  
Messing vernickelt,  
Glas.

**WBT 77**  
Bracking or ceiling lamp  
Design:  
Benedict Tonon, 1977.

Material:  
Nickel plated brass,  
glass.



**WAD 31**  
Art Déco-Wandleuchte  
Design:  
Frankreich um 1930.

Material:  
**WAD 31 Ni**  
Neusilber poliert.

**WAD 31 W**  
Aluminium weiß lackiert.

**WAD 31 Alu**  
Aluminium mattiert.

**WAD 31**  
Art Déco wall fixture  
Design:  
France about 1930.

Material:  
**WAD 31 Ni**  
Polished nickel silver.

**WAD 31 W**  
Aluminium, lacquered  
white.

**WAD 31 W**  
Aluminium brushed.

