

Face

Designer Luca Nichetto

Stackable chair, also for outdoor use, with anodized aluminium legs and single frame in hard moulded polyurethane. This material, which is very sturdy and easy to clean, make the seat versatile and usable in both homes and common areas. The hole in the back, which is also useful as a handle, ensure flexibility and greater conformity to the body of the occupant. Also available in a single-colour version with legs in painted aluminium.

Leg finish:

Anodised aluminium

Aluminium with lacquer in a colour to match the seat

Body finish:

White polyurethane (PO1)

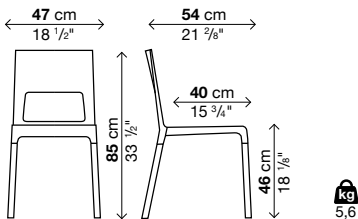
Red polyurethane (PO2)

Black polyurethane (PO3)

Beige polyurethane (PO4)

Stacking chair (L) max 10			
Code	Body	Legs	Vol.
05FAC01	polyurethane	anodised aluminium	0.36
05FAC02	polyurethane	colour to match the seat	0.36

4 chairs in each package




Face in hide

Designer Luca Nichetto

A best-seller from Kristalia with an even more prestigious look. With its polyurethane structure and aluminium legs, the Face chair is now available with new upholstery in hide, in 12 different colours. Thanks to its stackable nature, this elegant and refined version is also ideal for contract furnishing areas. Its hide upholstery adds quality and warm appeal to any interior, with the natural tactile and visual sensations it conveys and its fine workmanship.

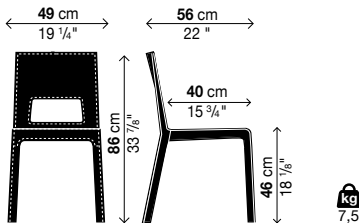
Finish of cover:

Hide (C1 → C12)

 For stitching and edge colours refer to “colour chart” on page 80.

Stacking chair (L) max 4		
Code	Finish of cover	Vol.
05FAC05	hide C1 → C12	0.36

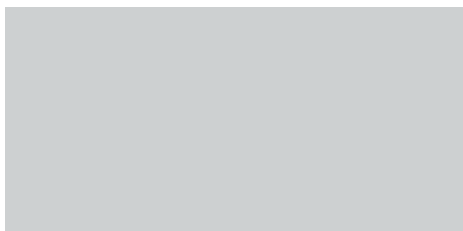
4 chairs in each package



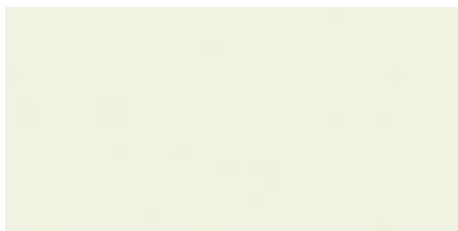
Finishes

Finiture metallo

Metal finish / Metallausführungen / Acabados metal / Finitions métal



Alluminio anodizzato / Anodised aluminium / Eloxiertes Aluminium / Aluminio anodizado / Aluminium anodisé



Bianco / White / Weiß / Blanco / Blanc



Rosso / Red / Rot / Rojo / Rouge



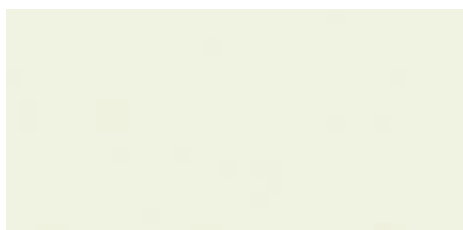
Nero / Black / Schwarz / Negro / Noir



Beige / Beige / Beige / Beige / Beige

Finiture poliuretano

Polyurethane finish / Ausführung Polyurethan / Acabados poliuretano / Finitions polyuréthane



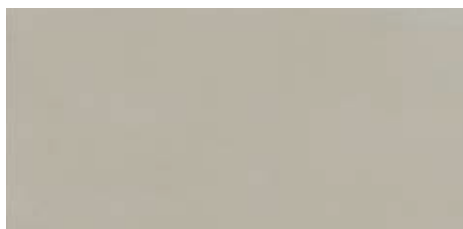
PO1 Bianco / White / Weiß / Blanco / Blanc



PO2 Rosso / Red / Rot / Rojo / Rouge



PO3 Nero / Black / Schwarz / Negro / Noir



PO4 Beige / Beige / Beige / Beige / Beige

Finishes

Finiture cuoio
Hide finishes / Ausführungen Kernleder / Acabados cuero / Finitions cuir

