



# BAP LED

design Alberto Meda/Paolo Rizzatto, 2011

**LUCE  
PLAN**

- Type: Table
- Lamps: LED 10W warm white 2700°K, dimmer
- Product use: Indoor
- Materials: Aluminium body, glass-reinforced nylon head.
- Colors: Structure in white or black
- Description: Specifically designed to provide correct lighting when used with computer monitors, the new BAP with LED source guarantees the best colour temperature with a lower energy consumption. The slim and elegant head integrates a blue polycarbonate filter.

Insulation class:  

Reference code: Structure  
1D19LL000001 black  
1D19LL000002 white

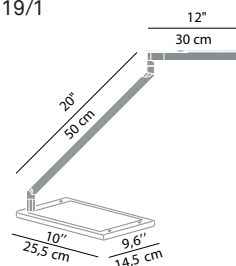
Table base D19/1  
1D19/1N00001 black  
1D19/1N00002 white

Surface mount D19/2  
1D19/2000001 black  
1D19/2000002 white

Fixing pin D19/8  
1D19/8000001 black  
1D19/8000002 white

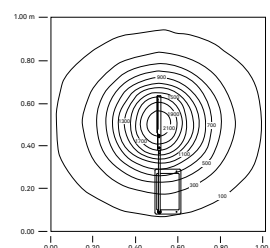


D19LED + D19/1

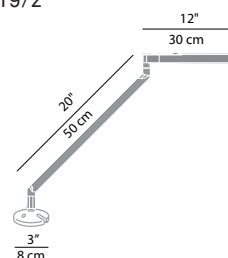


Isolux

head h 50cm  
max Lux = 2191 lx

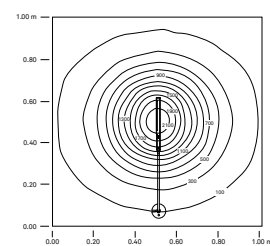


D19LED + D19/2



Isolux

head h 50cm  
max Lux = 2191 lx



D19LED + D19/8

